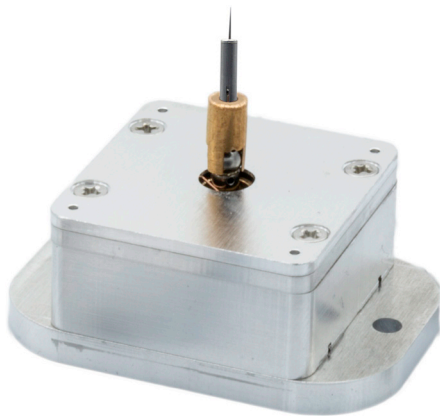


Nanolathe

There are a variety of experiments that require rotating a sample around a well defined axis. These include milling nano-pillars, rotating samples on axis for x-ray analysis, and many more.



ACTUAL SIZE

The Nanolathe employs a linear drive positioned on top of a rotation motor. The linear drive is used to position the sample's Region Of Interest (ROI) directly on top of the axis of rotation, thus allowing the user to rotate the entire sample around the ROI..

Technical specifications

- Length 30 mm
- Width 30 mm
- Height 40 mm
- Weight 45 g
- Rotation 360° (unlimited)
- Rotation resolution 10^{-7} rad
- Circular runout < 500 nm
- Linear range ± 1 mm
- Temperature range 273 K to 353 K
- Lowest pressure 10^{-7} mbar
- Material Stainless steel, aluminium

